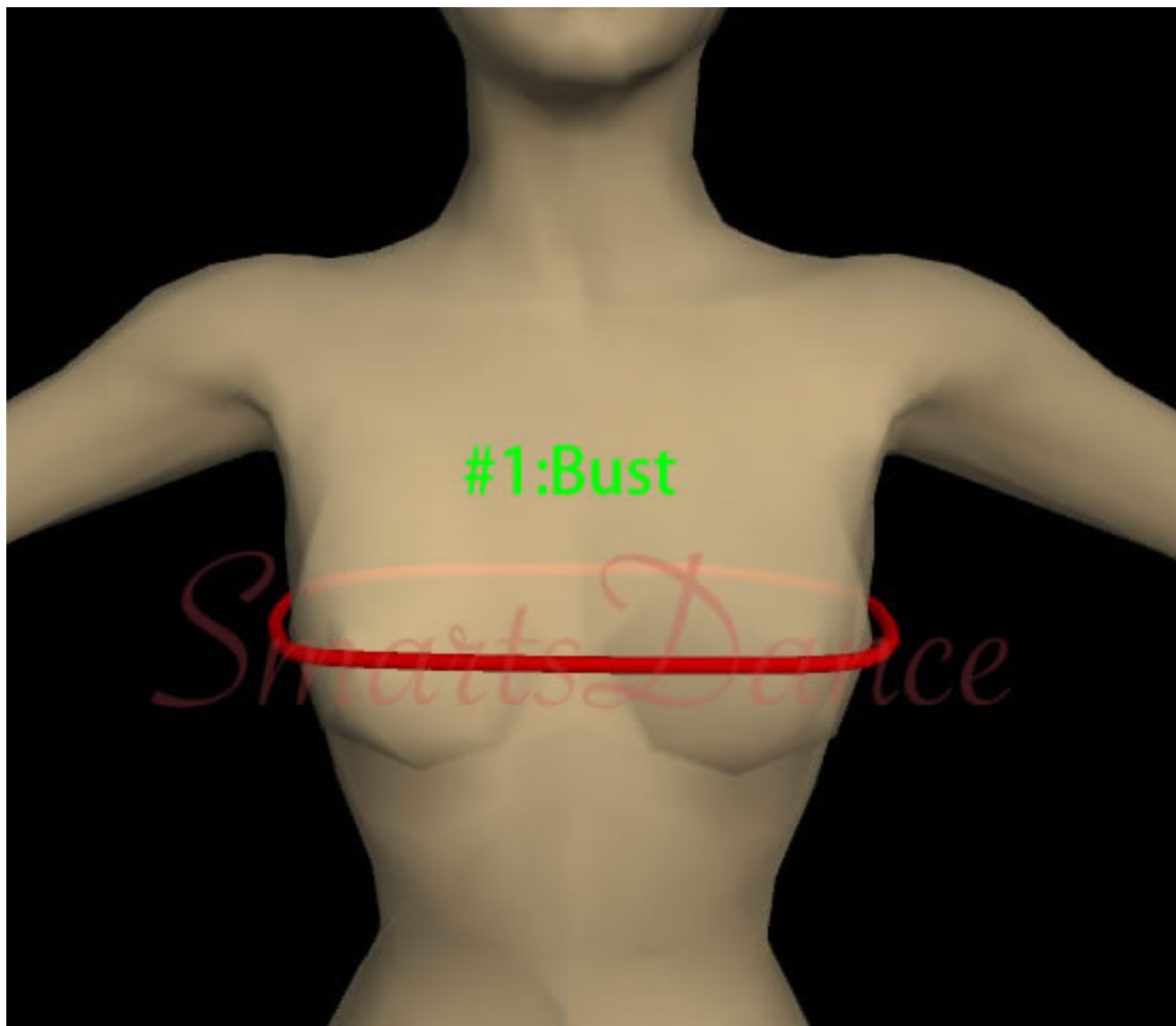
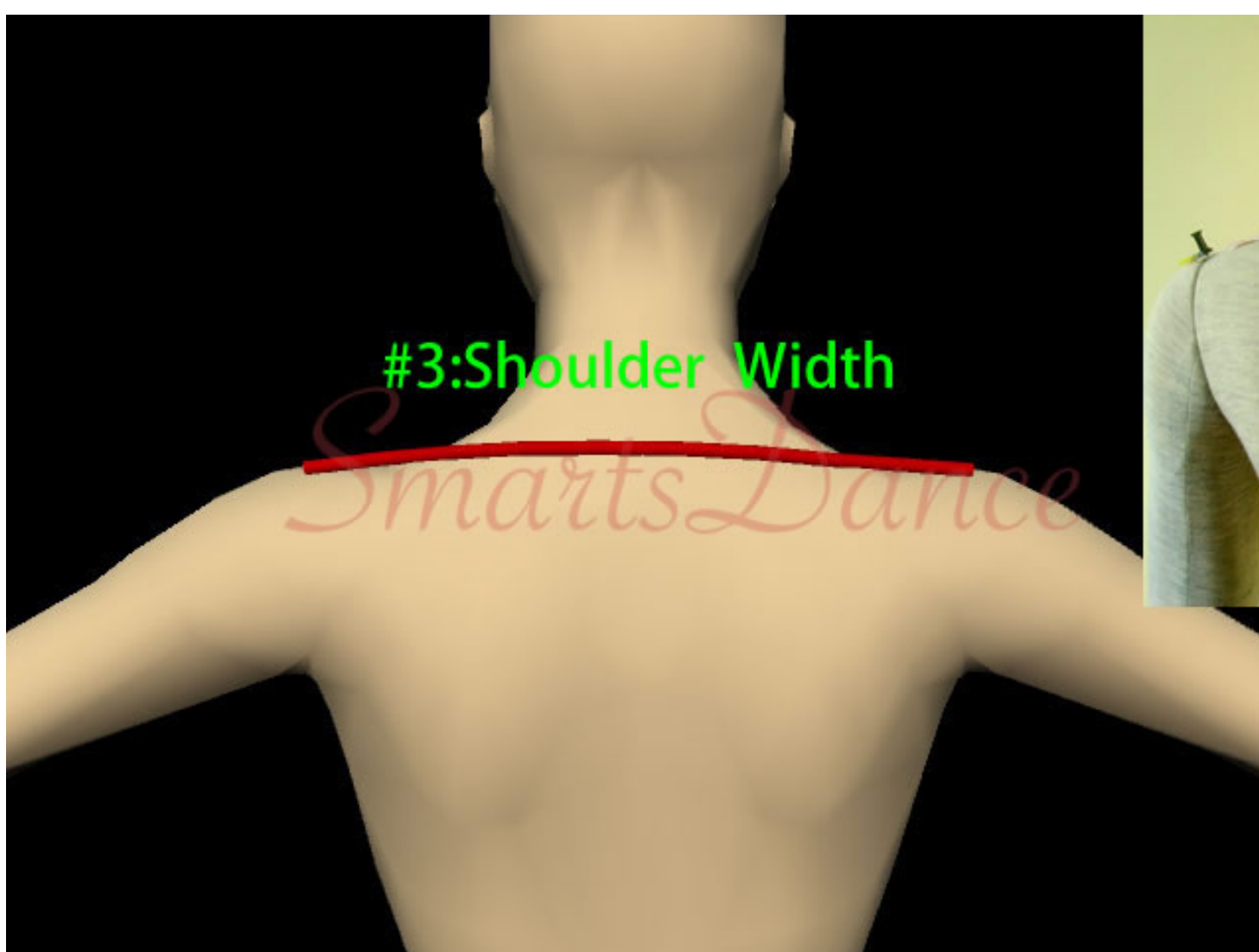


(please attent the correction measurement: #12, #16)

**1	Bust				
**2	Waist		**12	Torso (From shoulder over bust to crotch to shoulder. Start near neck 1 inch)	
**3	Shoulder Width		13	Ballroom Dress length from shoulder (Over bust, Start near neck 1 inch) to hem.	
**4	Hip (20 cm below waist)		14	Latin Dress length from shoulder (Over bust, Start near neck 1 inch) to Shortest point	
**5	Center shoulder to bust point(Start near neck 1 inch)		15	Latin Dress length from shoulder (Over bust, Start near neck 1 inch) to Longest point	
**6	Around neck		**16	Top Hip(About 13cm below Waist)	
7	Sleeve Length(Shoulder to wrist)		**17	Your Height(Without wearing shoes)	
**8	Biceps		18	Latin Dress point back length(Start from waistband to shortest point)	
**9	Wrist		19	Latin Dress Longest point back length(Start from waistband to Longest point)	
**10	Armhole		20	Latin Dress length without fringe (Start near neck 1 inch, over bust)	
**11	Center shoulder to Waist (Over bust, Start near neck 1 inch).		**21	Shoulder to back waist (Start near neck 1 inch)	









(20 cm below waist)

#4:Hip

A front view of a light-colored mannequin torso. A red line is drawn horizontally around the hips, approximately 20 cm below the waist. The text "(20 cm below waist)" is written in yellow above the line, and "#4:Hip" is written in green on the line. A faint, large, pink watermark "SmartsDance" is visible across the center of the image.



#4.Hip (20 cm below waist)

A back view of a light-colored mannequin torso. A silver elastic tape is wrapped around the waist. A red measuring tape is wrapped around the hips, approximately 20 cm below the waist. The text "#4.Hip (20 cm below waist)" is written in red above the measuring tape.

(Start near neck 1 inch)

SmartsDance
#5:Center shoulder to bust point

1 inch

#5.Center shoulder to bust point
(start near neck 1 inch)

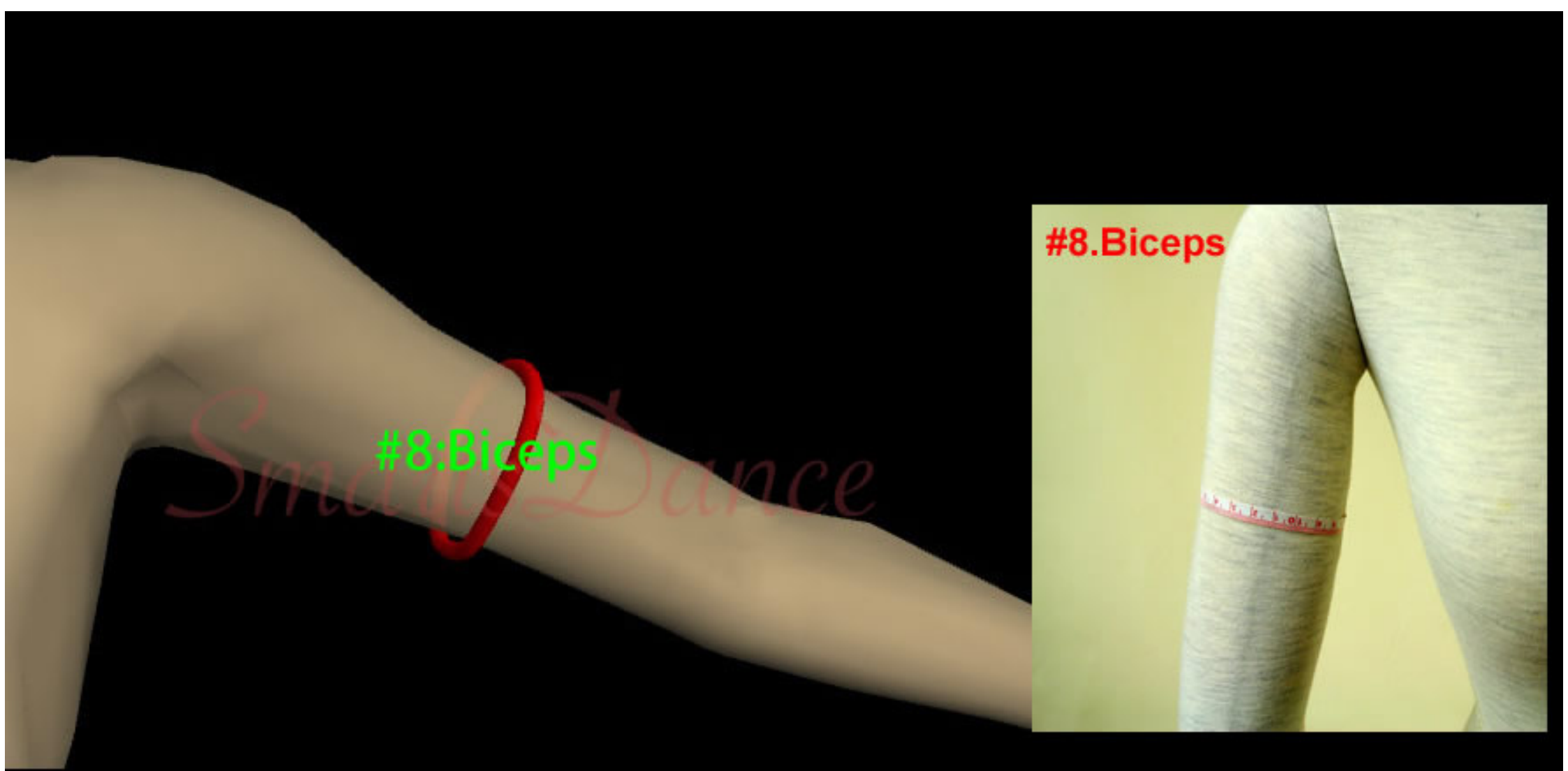


(Shoulder to wrist)

#7:Sleeve Length

Smarts Dance

#7.Sleeve Length
(Shoulder to wrist)



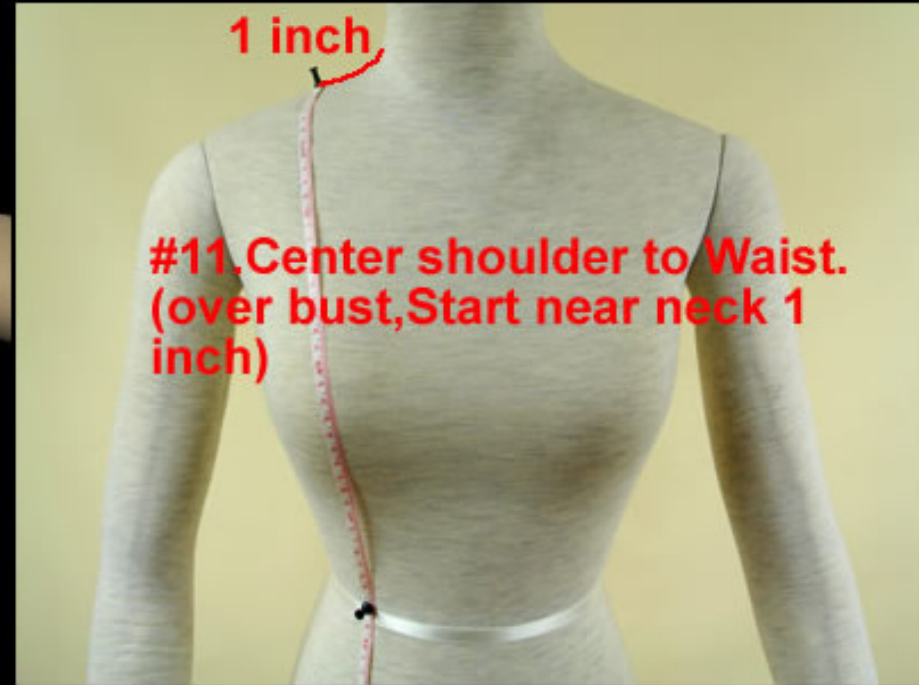
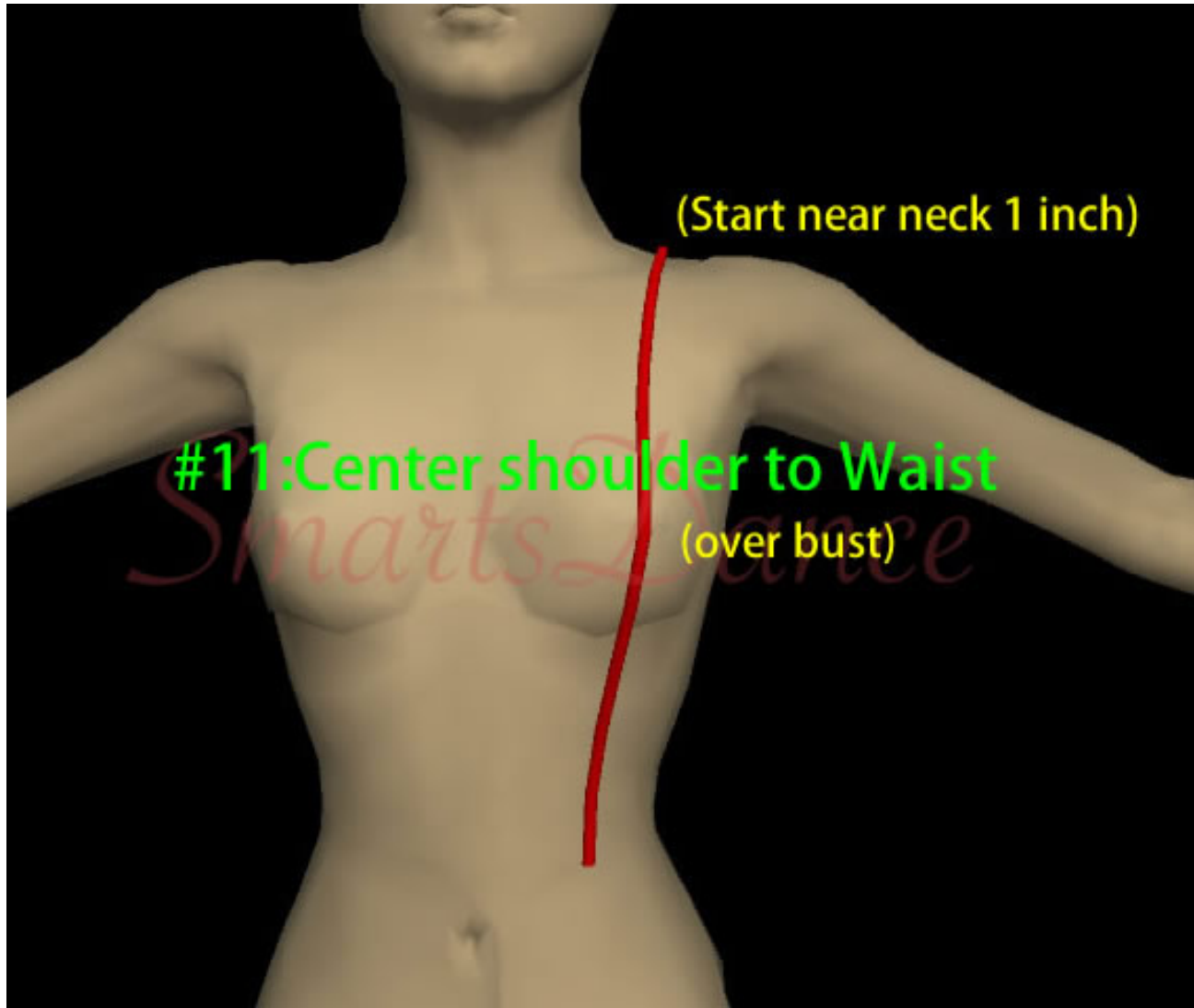


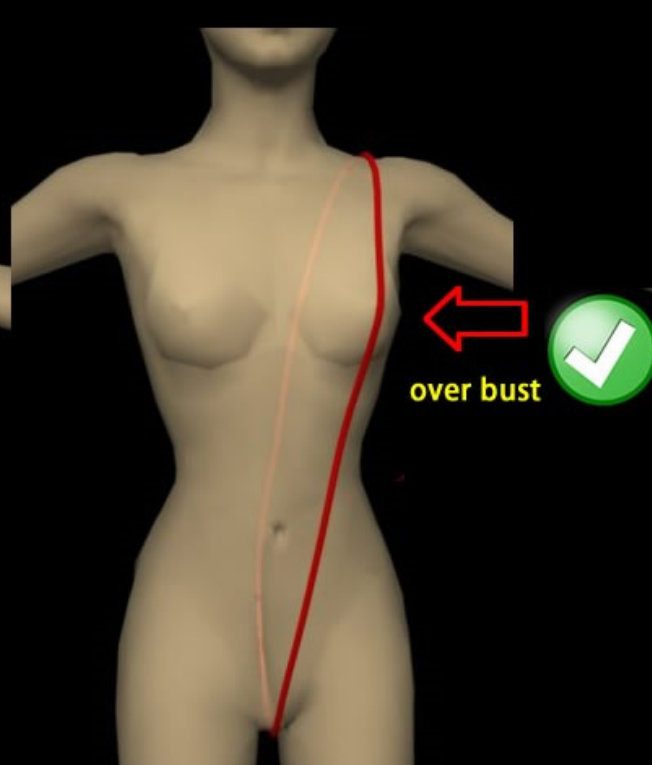
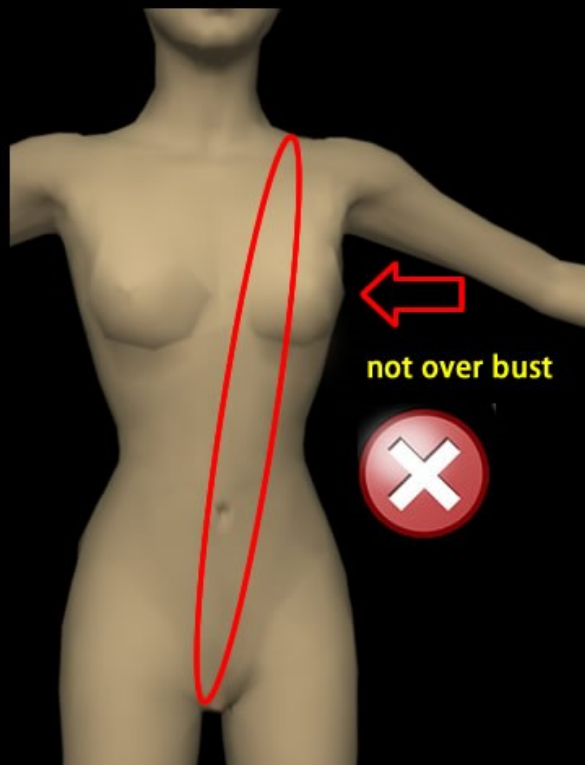
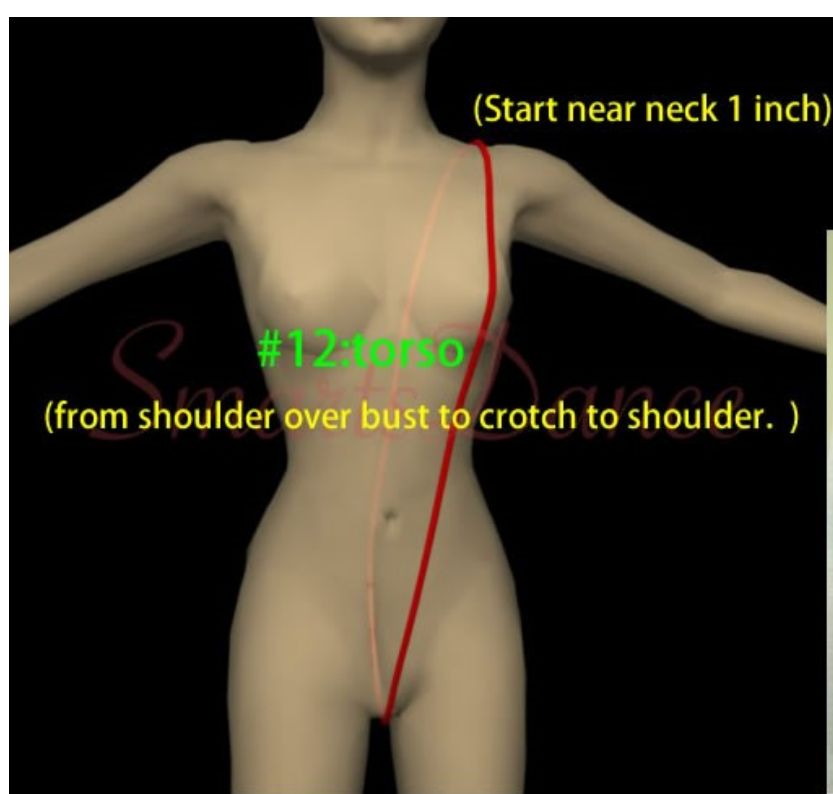
#10: Armhole

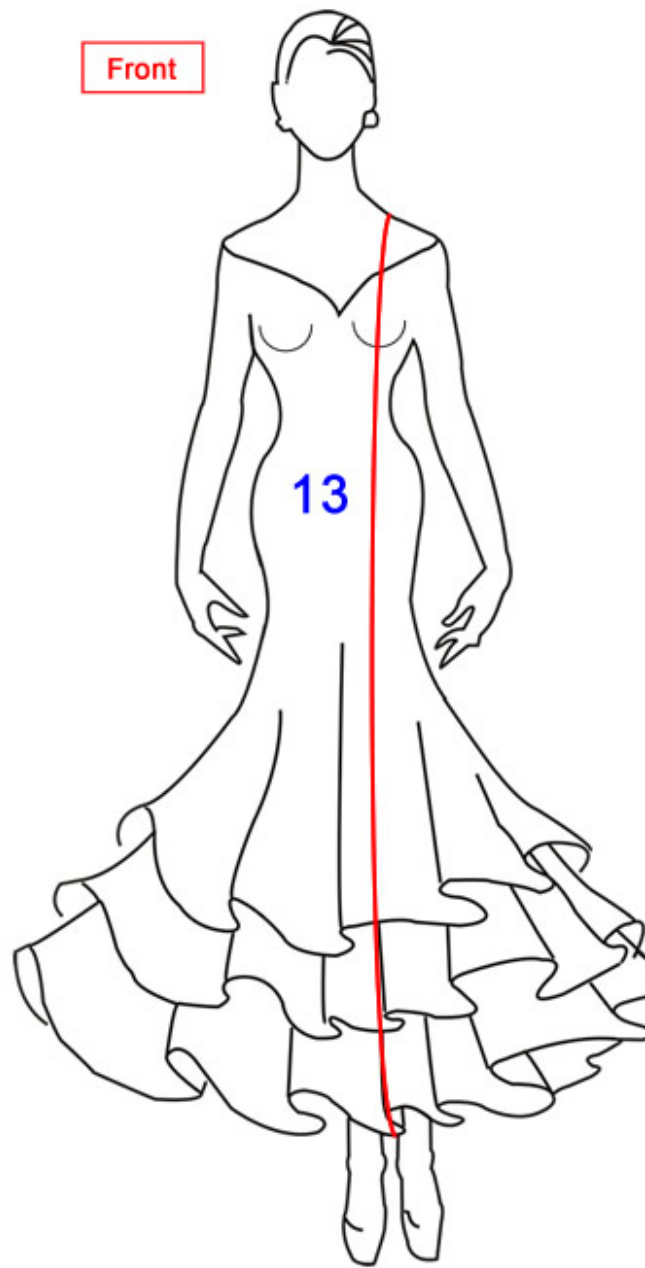
Smarts Dance

#10. Armhole

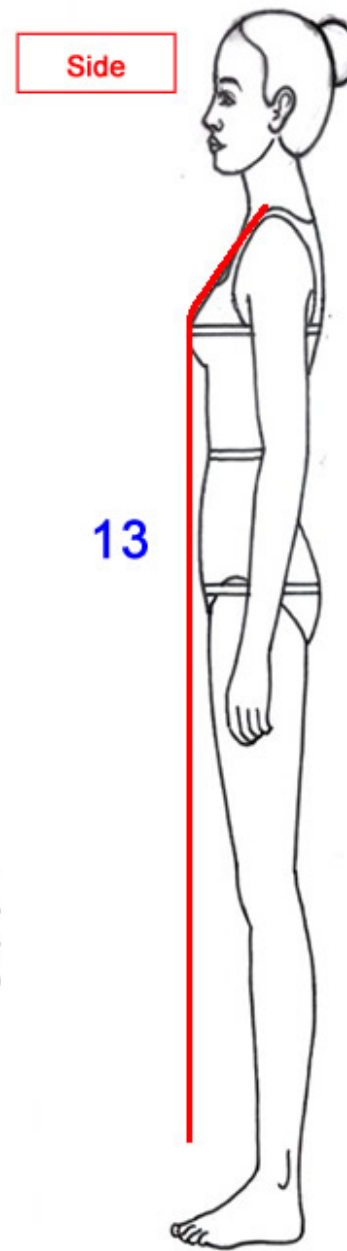


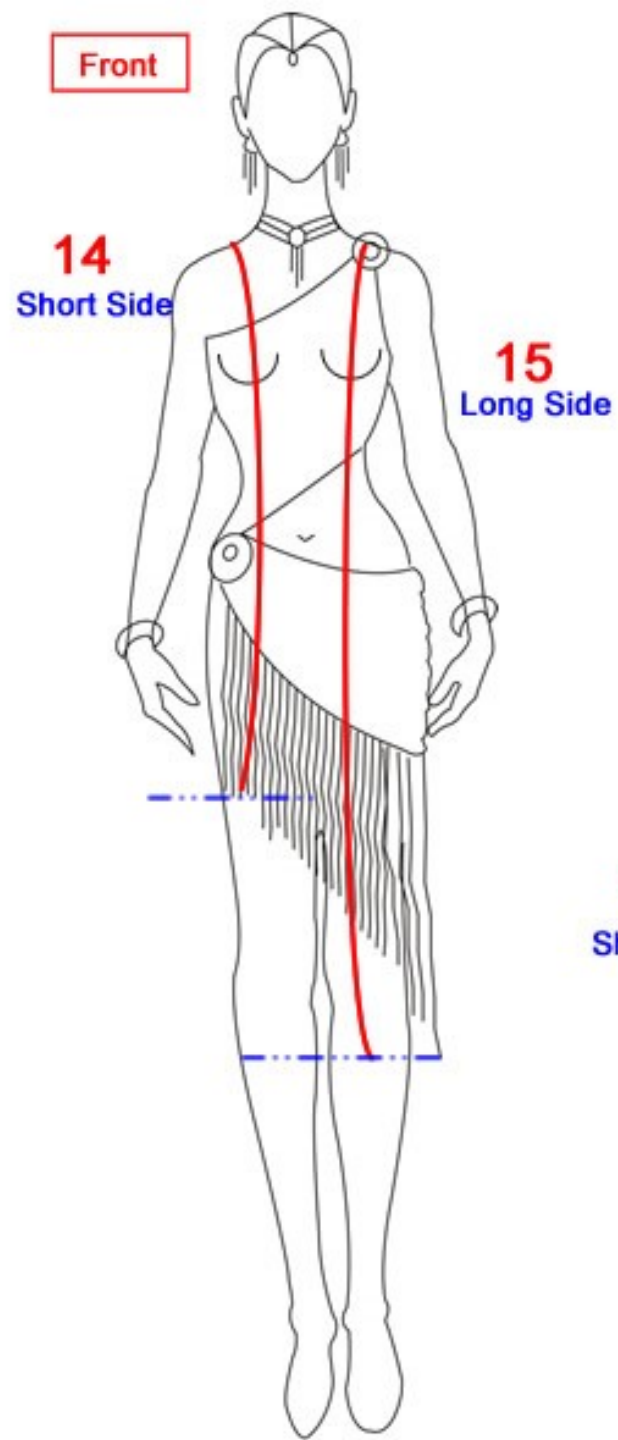




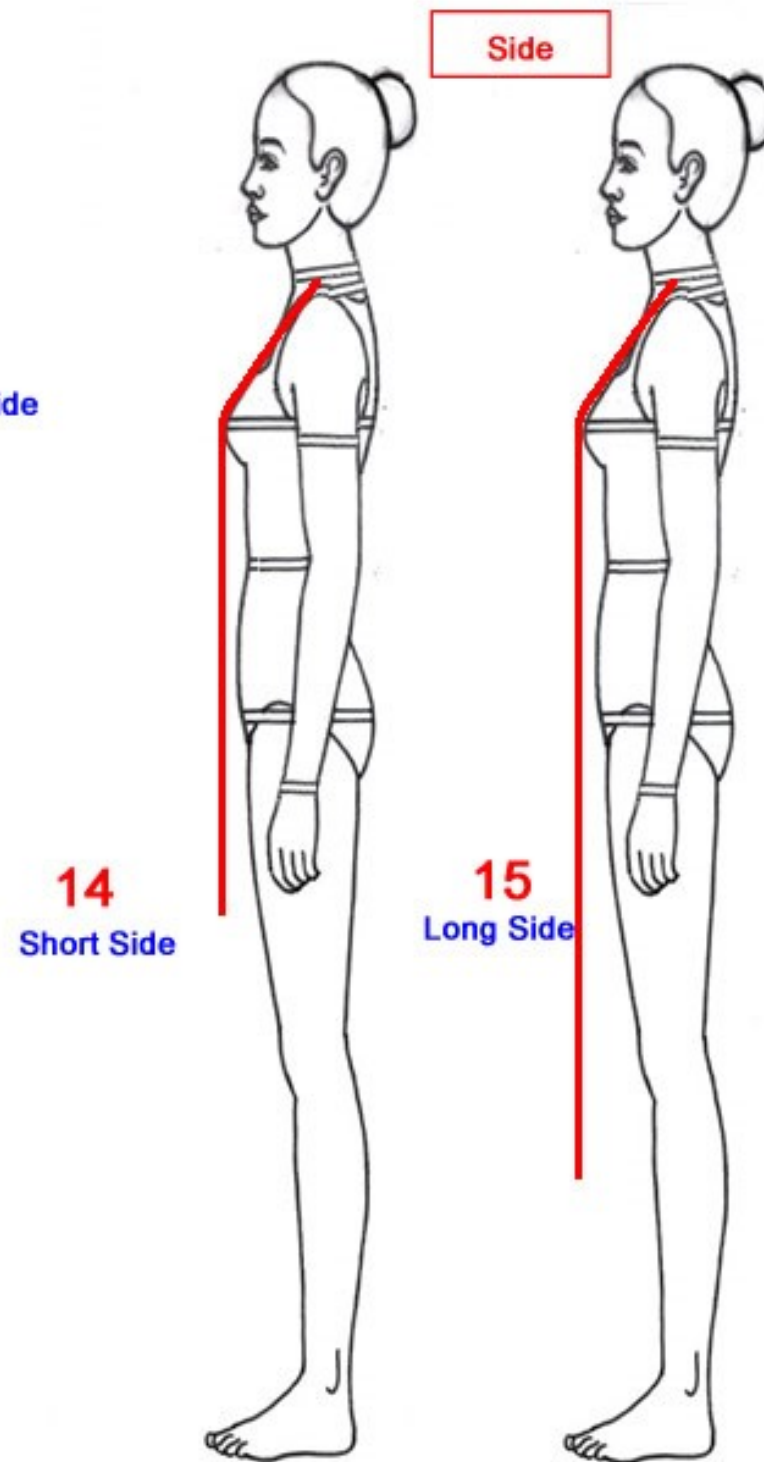


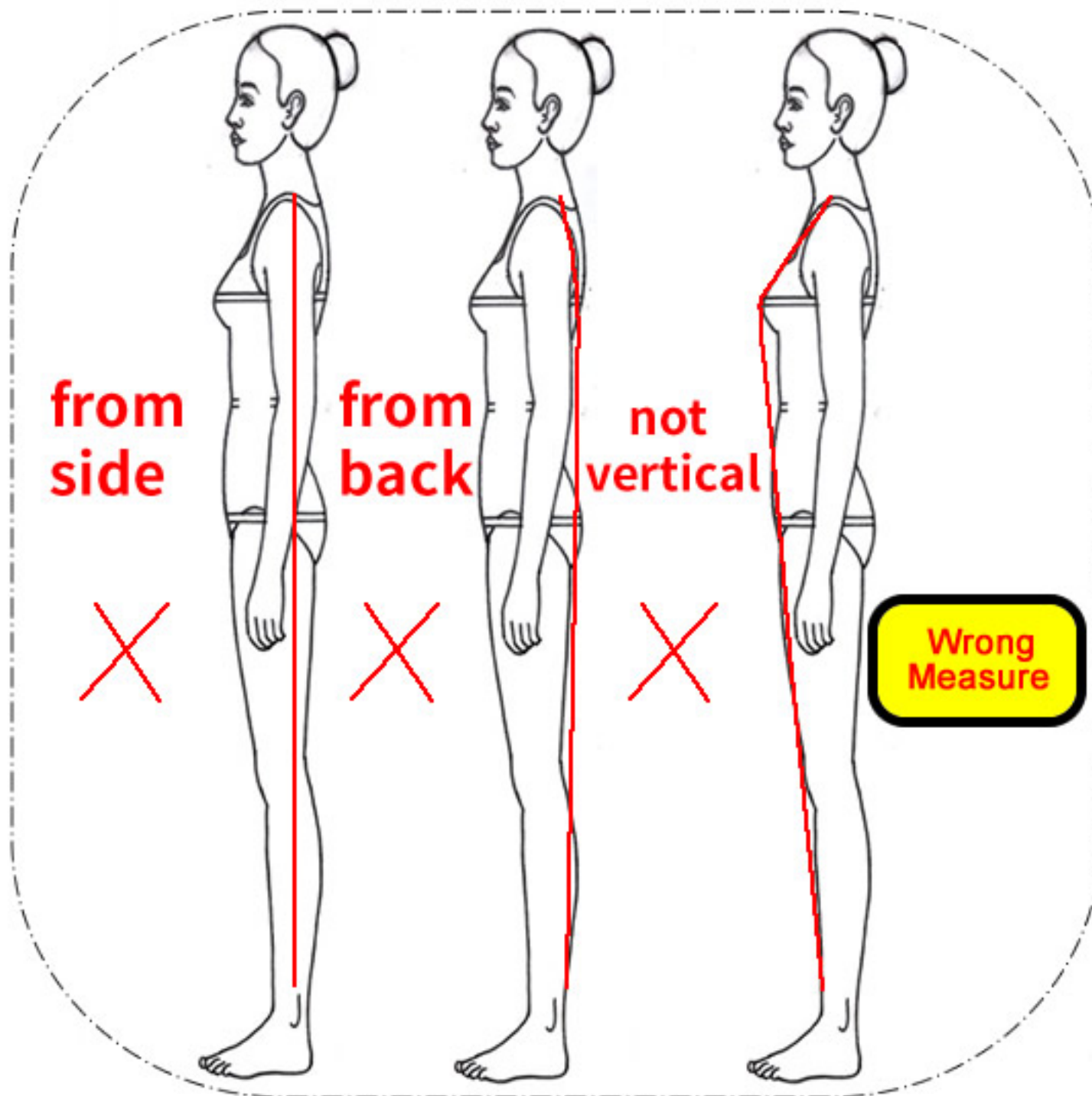
Ballroom Dress Length





Latin Dress Length

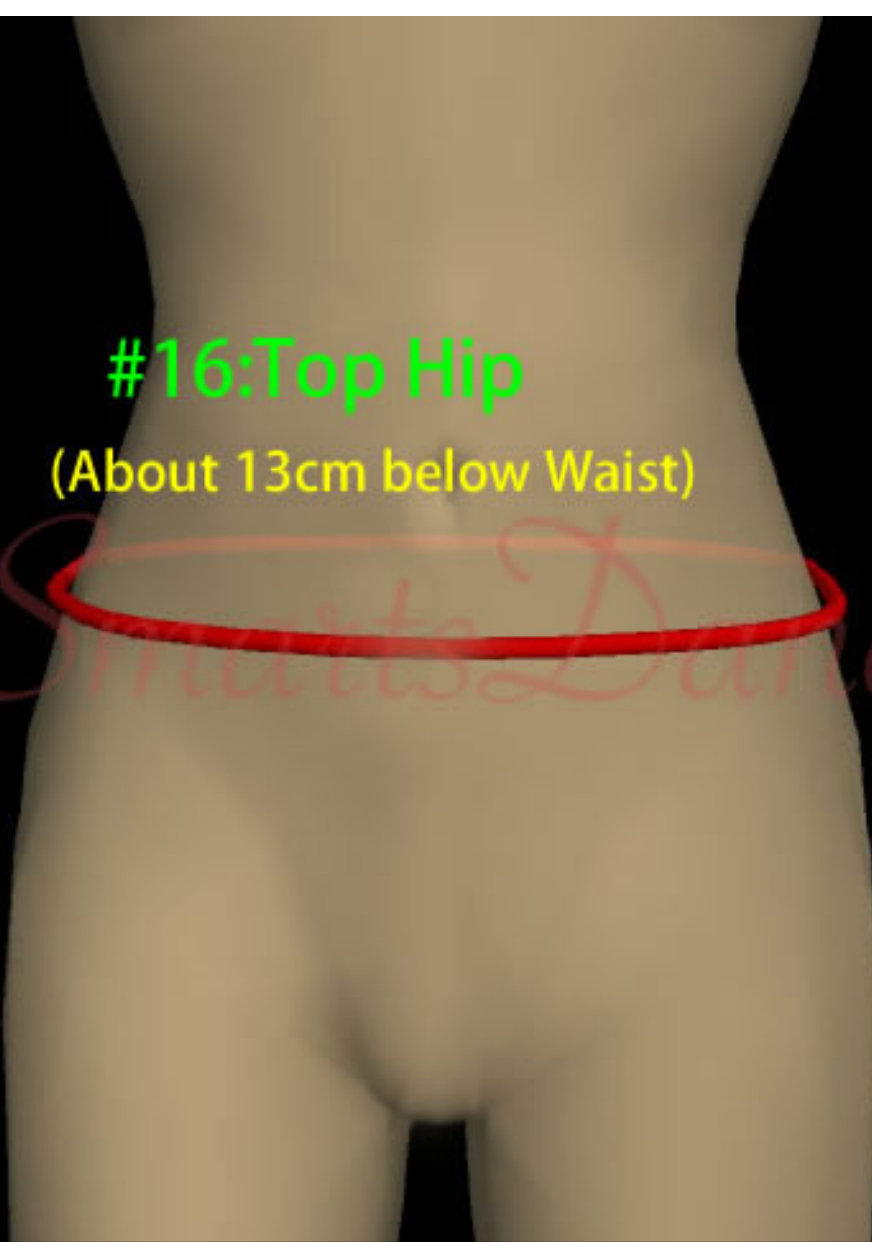




#16:Top Hip

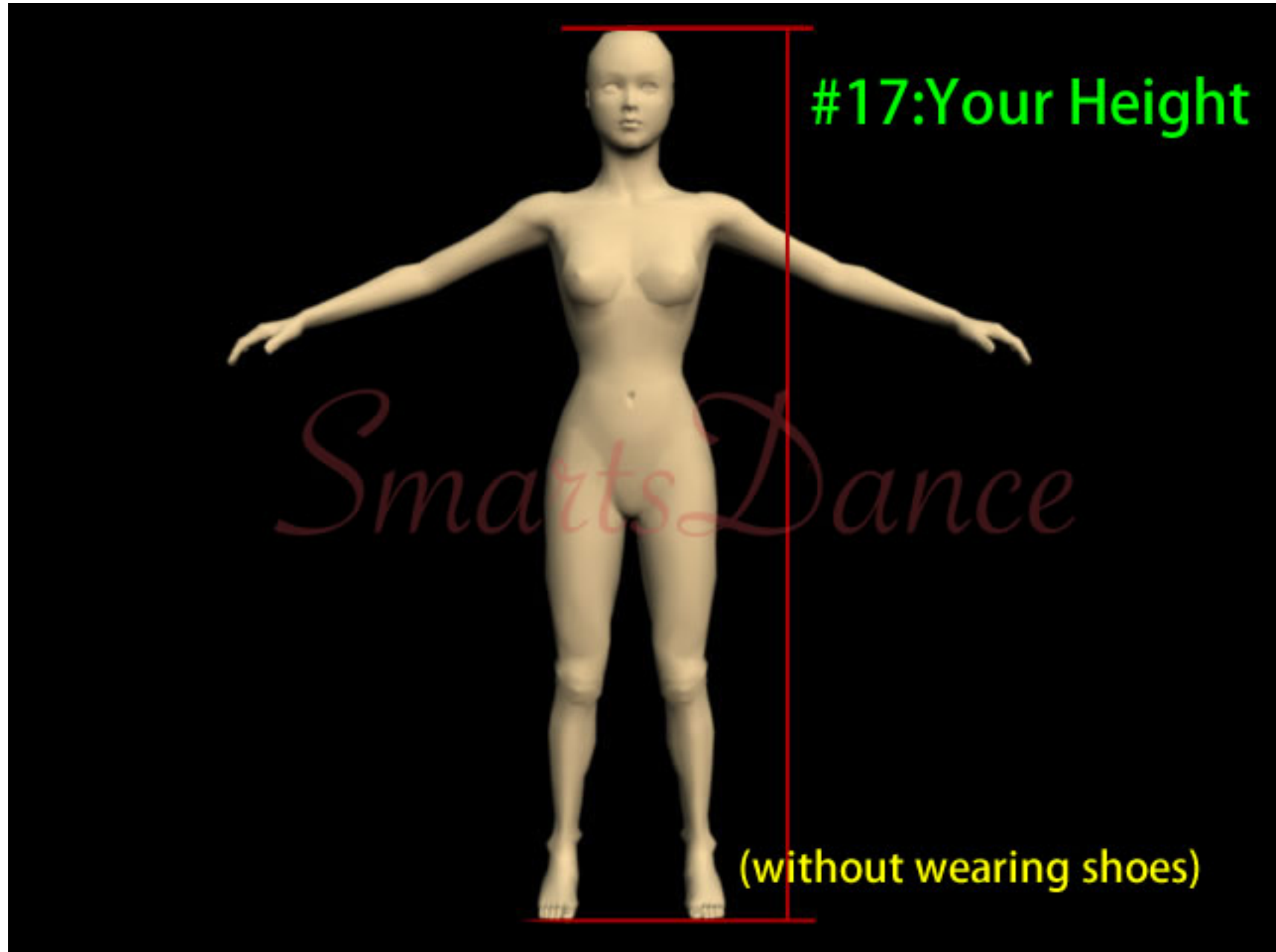
(About 13cm below Waist)

Smarts Dance



#16 Top Hip
(About 13cm below Waist)





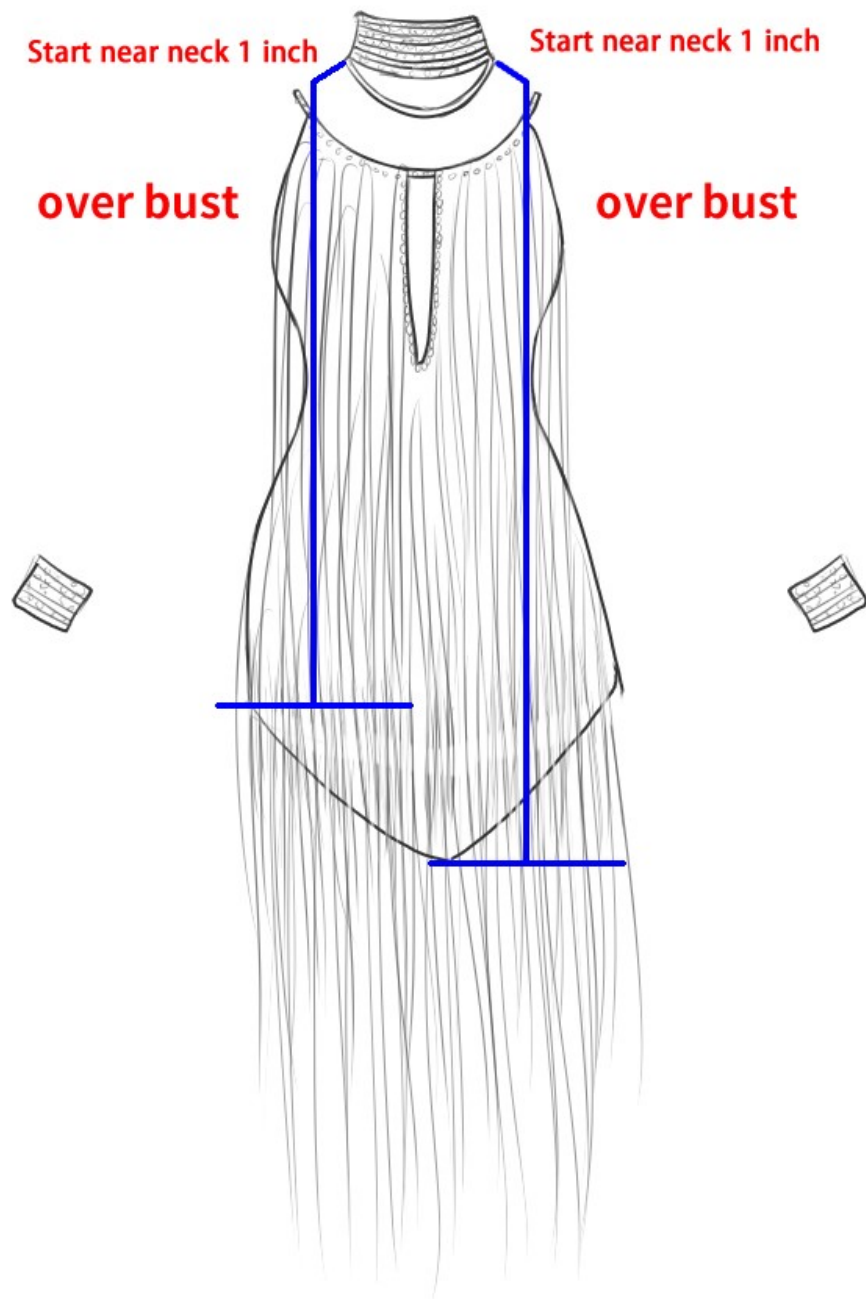
#18 #19 Just apply this style

The back is empty or half empty. The skirt start from waistband, dont connect with the back of top

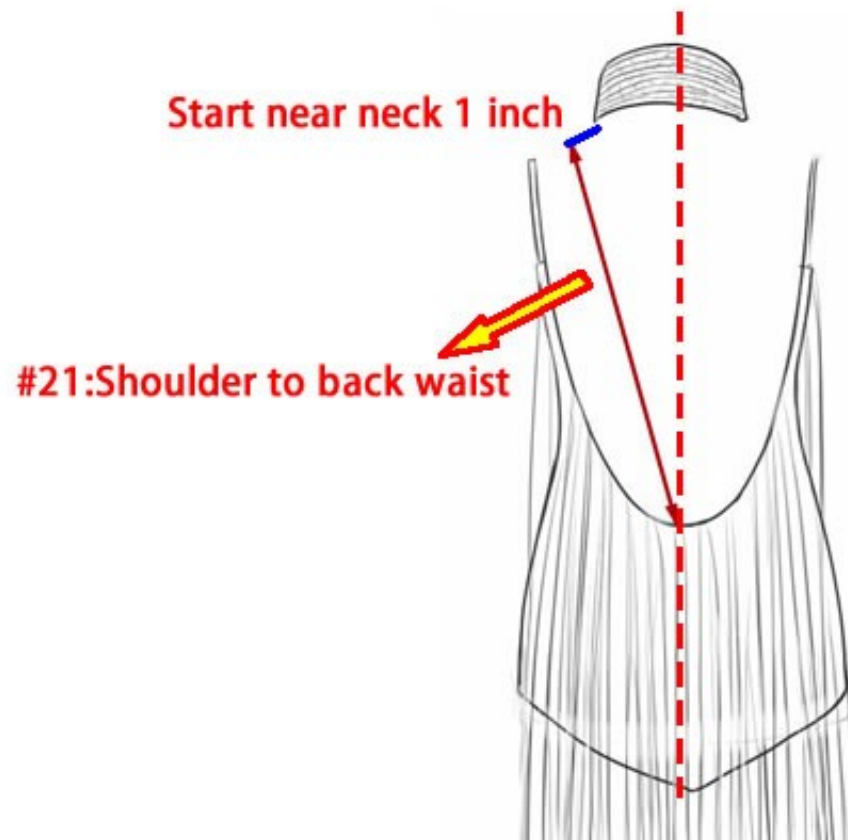


#18. Latin Dress Shortest point back length start from waistband to Shortest point)

#19. Latin Dress Longest point back length start from waistband to Longest point)



**#20.Latin Dress length without fringe
(Start near neck 1 inch,over bust)**



For example

