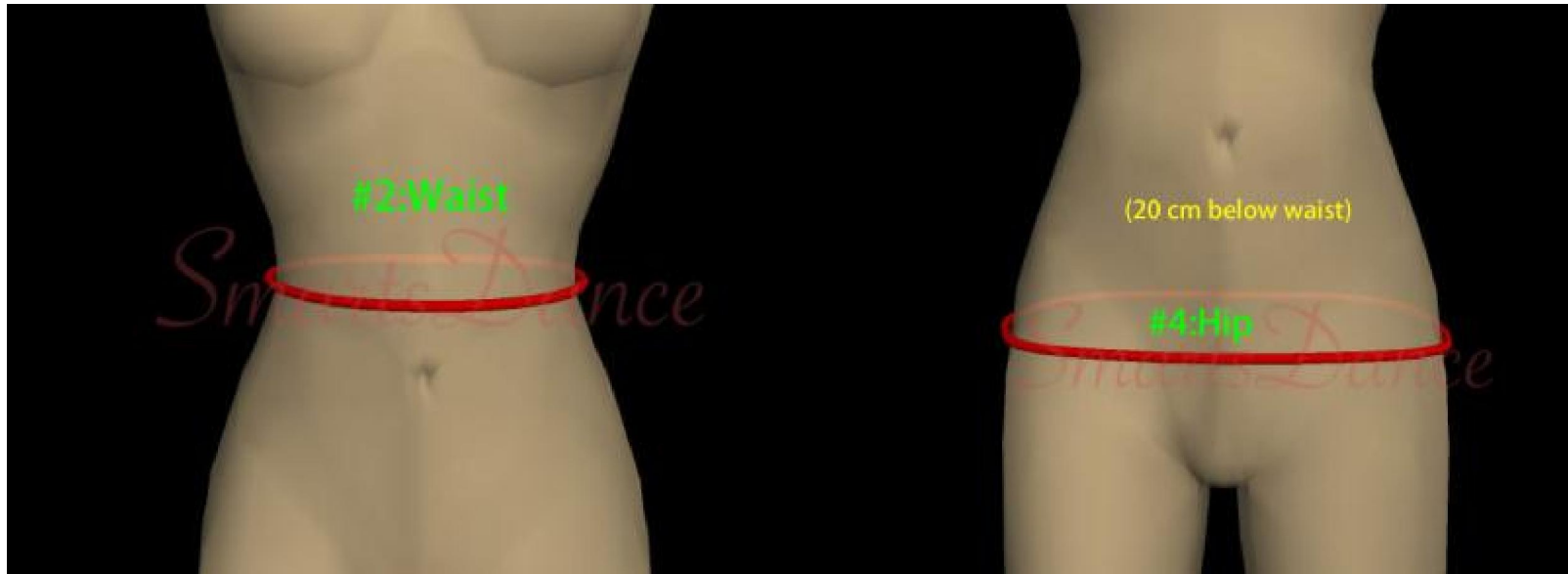
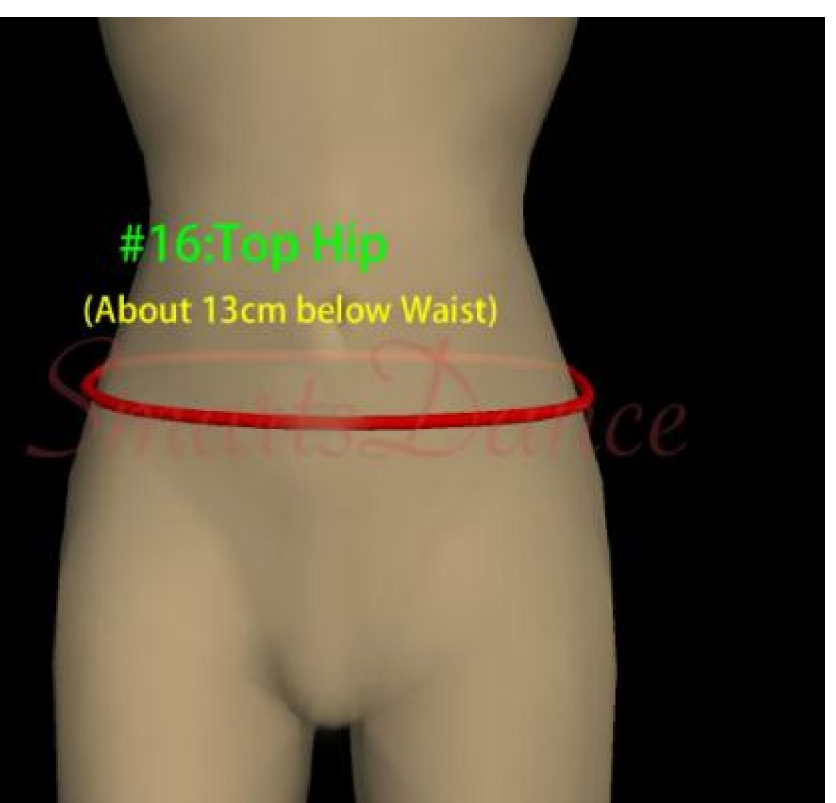
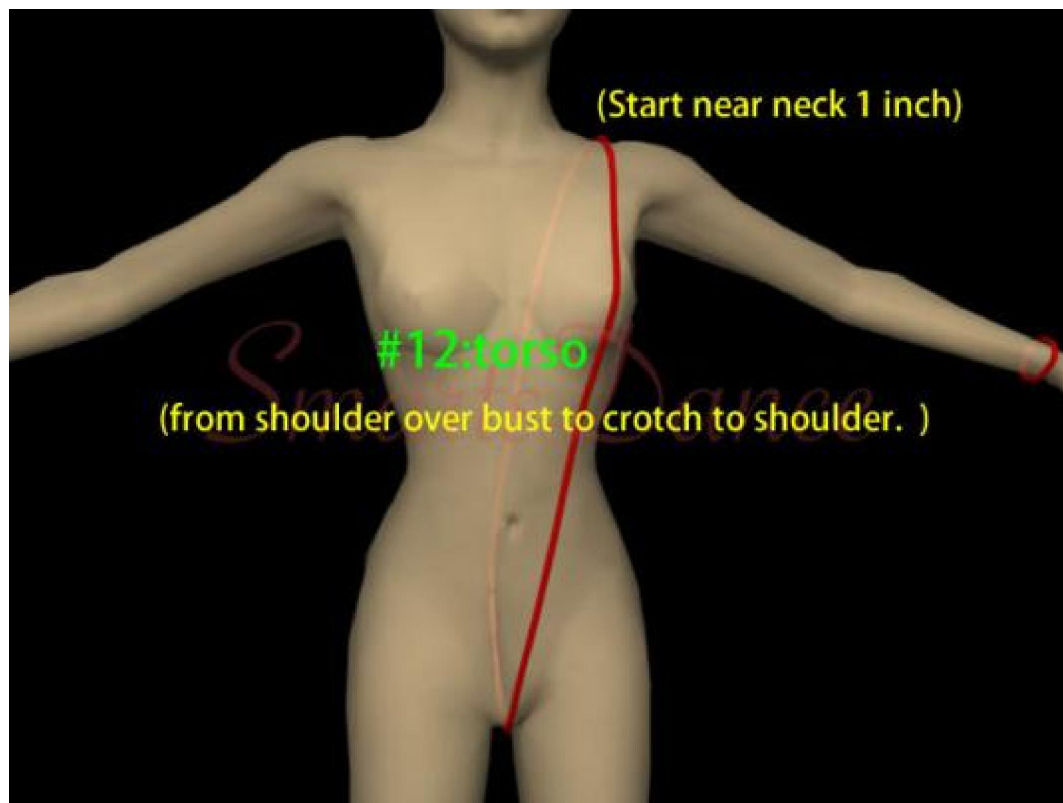
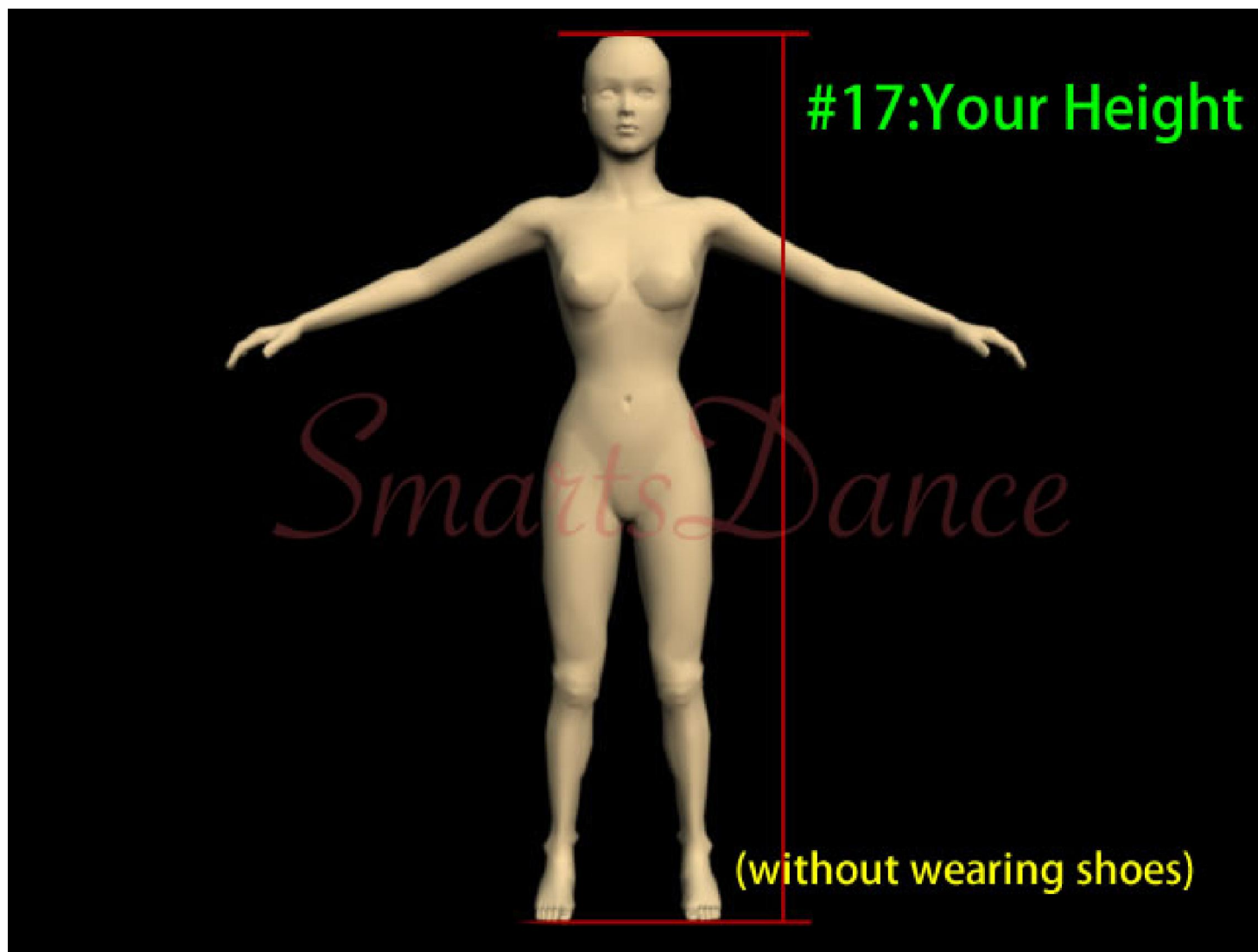


2	Waist	
4	Hip (20 cm below waist)	
12	torso (from shoulder over bust to crotch to shoulder. Start near neck 1 inch)	
13	Skirt length(straight style)	
	Skirt length Shortest point	
13-1	(if skirt is asymmetrical style, please use this)	
	Skirt length Longest point	
13-2	(if skirt is asymmetrical style, please use this)	
16	Top Hip(About 13cm below Waist)	
17	Your Height(without wearing shoes)	

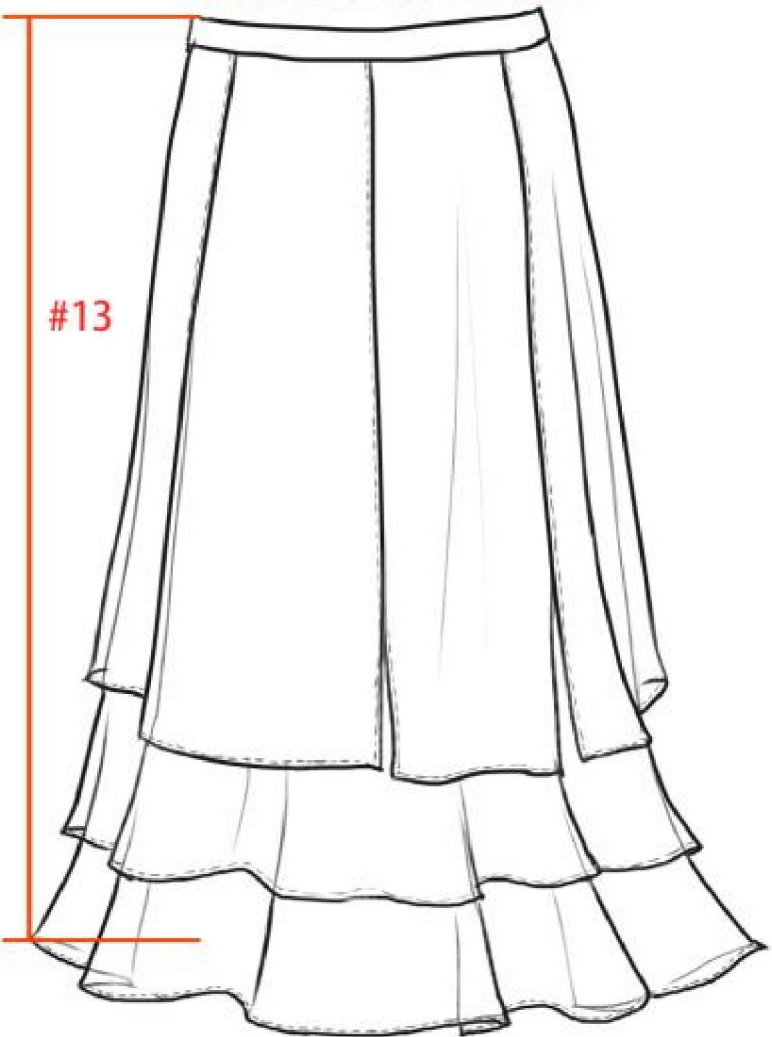






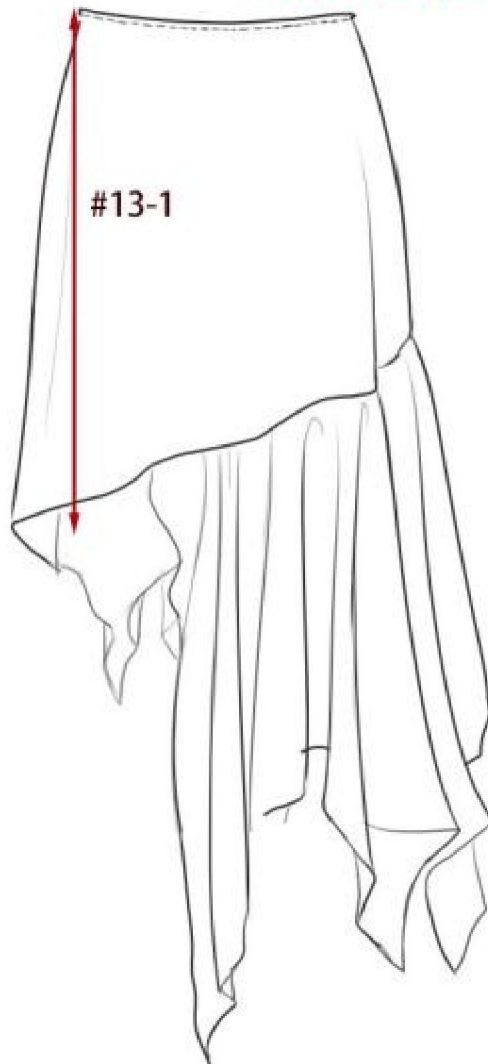
apply to straight style

#13



apply to asymmetrical style

#13-1



#13-2

